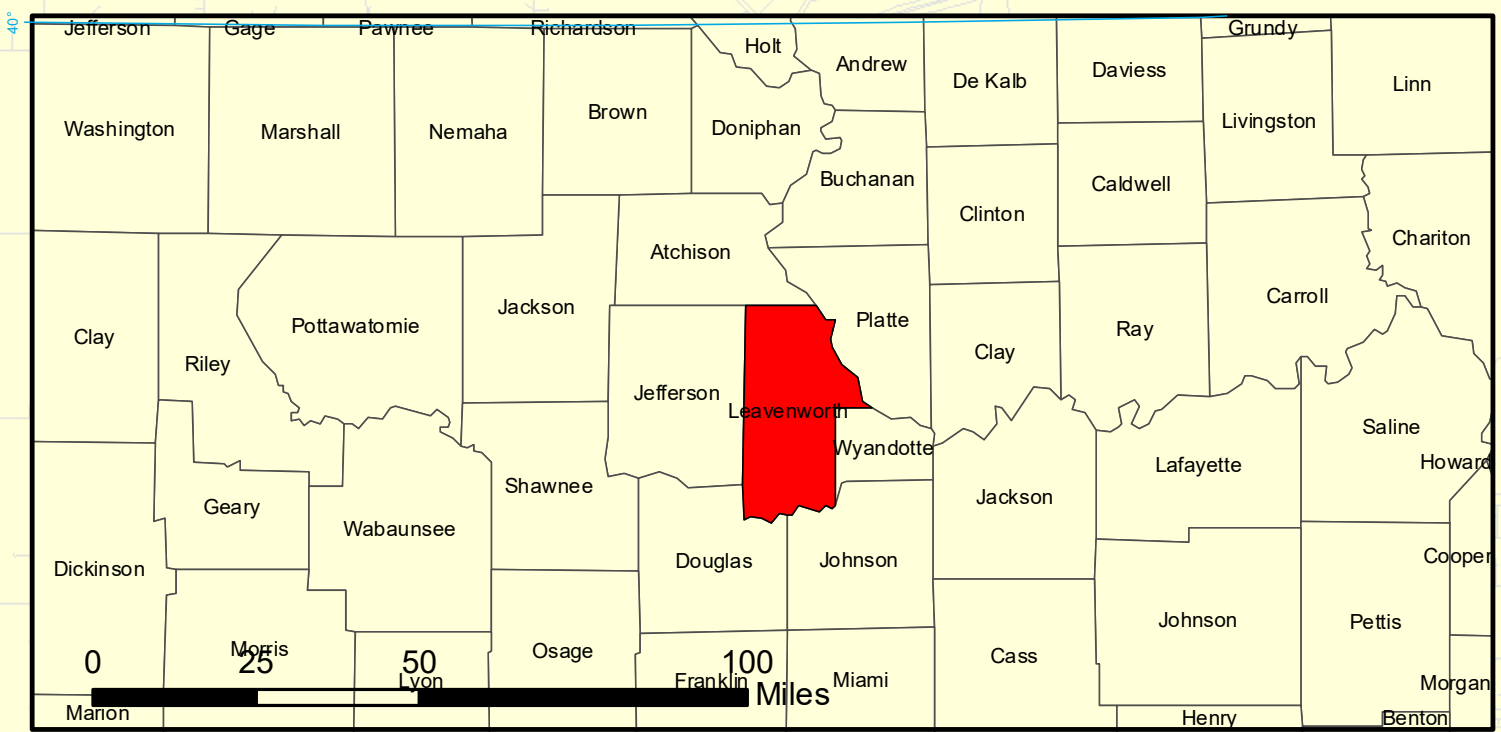
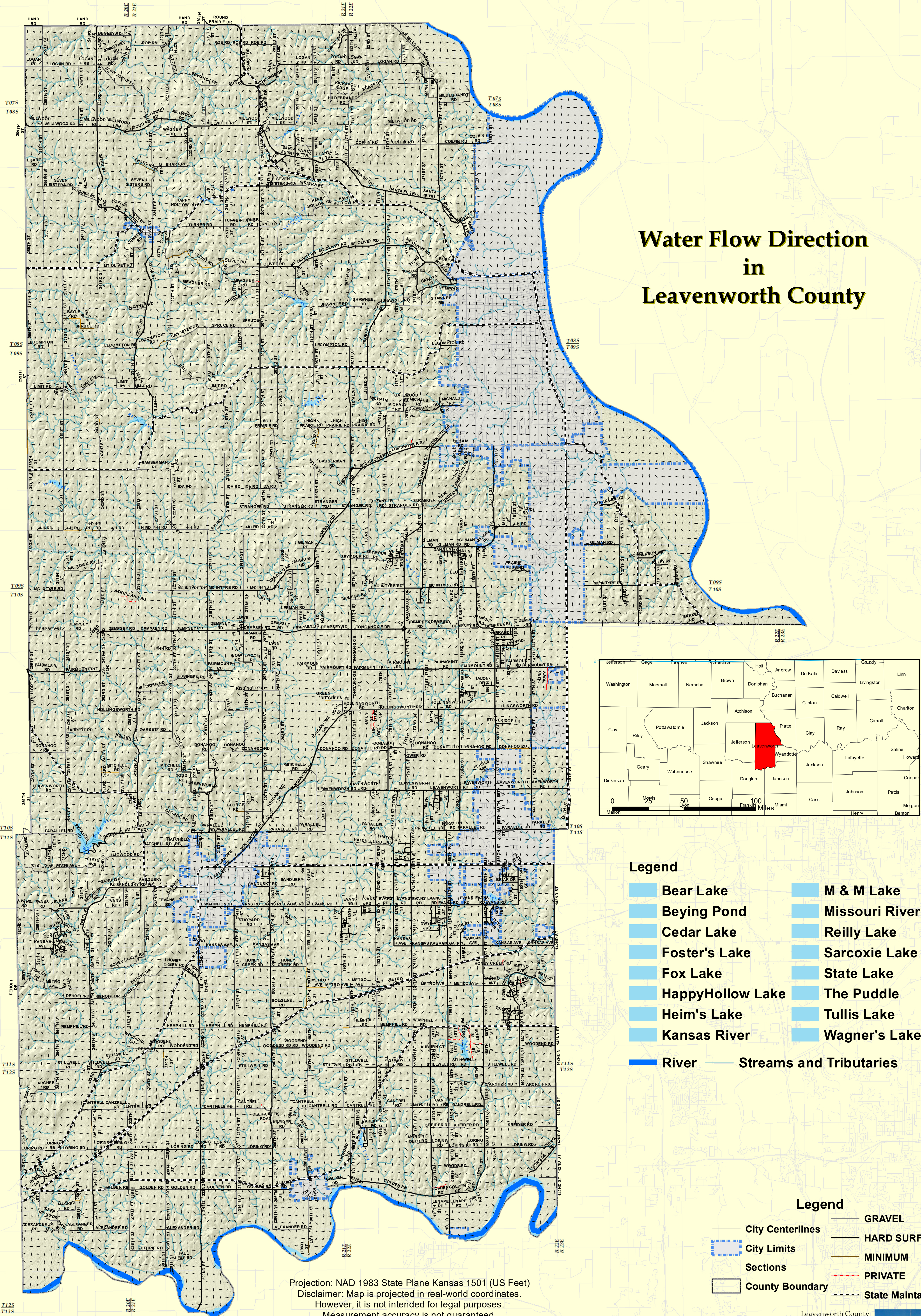




LEAVENWORTH COUNTY KANSAS 2025



Water Flow Direction in Leavenworth County



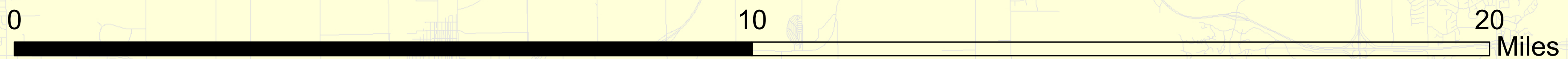
Legend

- Bear Lake
- Beying Pond
- Cedar Lake
- Foster's Lake
- Fox Lake
- HappyHollow Lake
- Heim's Lake
- Kansas River
- M & M Lake
- Missouri River
- Reilly Lake
- Sarcoxie Lake
- State Lake
- The Puddle
- Tullis Lake
- Wagner's Lake
- River
- Streams and Tributaries

Legend

- City Centerlines
- City Limits
- Sections
- County Boundary
- GRAVEL
- HARD SURFACE
- MINIMUM
- PRIVATE
- State Maintained

Projection: NAD 1983 State Plane Kansas 1501 (US Feet)
 Disclaimer: Map is projected in real-world coordinates.
 However, it is not intended for legal purposes.
 Measurement accuracy is not guaranteed.



Leavenworth County
 GIS Services
 300 Walnut Suite 030
 Leavenworth, KS 66048
 Ph: 913-758-6780
 Ph: 913-684-0443

